



KENNEDY
ELEVATION-A

54'-0" WIDE BY 53'-0" DEEP

SQUARE FOOTAGE

1st FLOOR:	1892 SQ. FT.
2nd FLOOR:	1853 SQ. FT.
TOTAL:	3745 SQ. FT.
FRONT PORCH:	194 SQ. FT.
REAR PORCH:	171 SQ. FT.
OPTIONAL DECK:	218 SQ. FT.
GARAGE:	476 SQ. FT.
1-CAR GARAGE:	240 SQ. FT.

3745 SQ. FT.

4-5 BEDROOM
3.5 BATHROOM

WIDTH = 54'-0"
DEPTH = 53'-0"

MARCH 5, 2024





KENNEDY
ELEVATION-B

54'-0" WIDE BY 53'-0" DEEP

SQUARE FOOTAGE

1st FLOOR:	1892 SQ. FT.
2nd FLOOR:	1853 SQ. FT.
TOTAL:	3745 SQ. FT.
FRONT PORCH:	194 SQ. FT.
REAR PORCH:	171 SQ. FT.
OPTIONAL DECK:	218 SQ. FT.
GARAGE:	476 SQ. FT.
1-CAR GARAGE:	240 SQ. FT.

3745 SQ. FT.

4-5 BEDROOM
3.5 BATHROOM

WIDTH = 54'-0"
DEPTH = 53'-0"

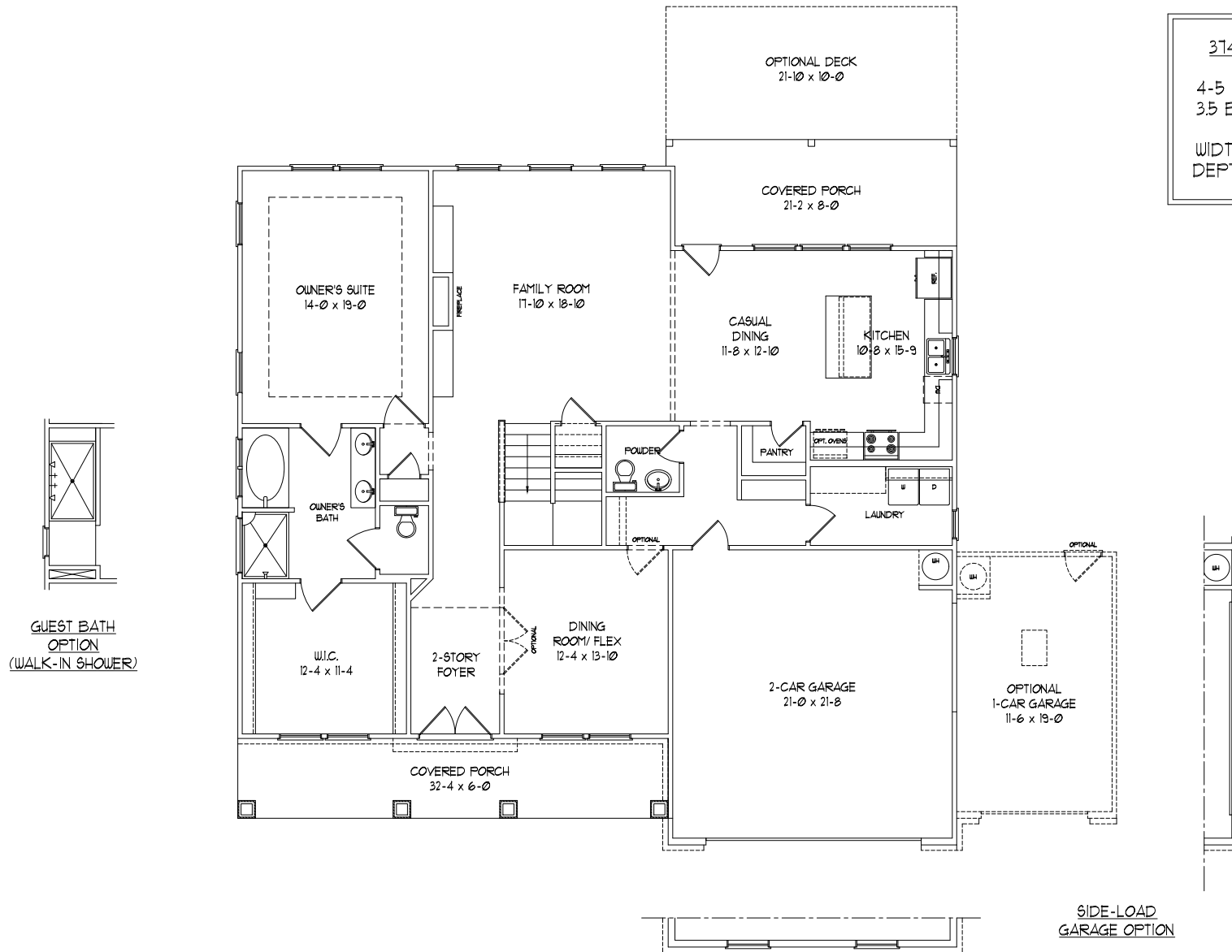
MARCH 5, 2024



3745 SQ. FT.

4-5 BEDROOM
3.5 BATHROOM

WIDTH = 54'-0"
DEPTH = 53'-0"



KENNEDY
FIRST FLOOR PLAN

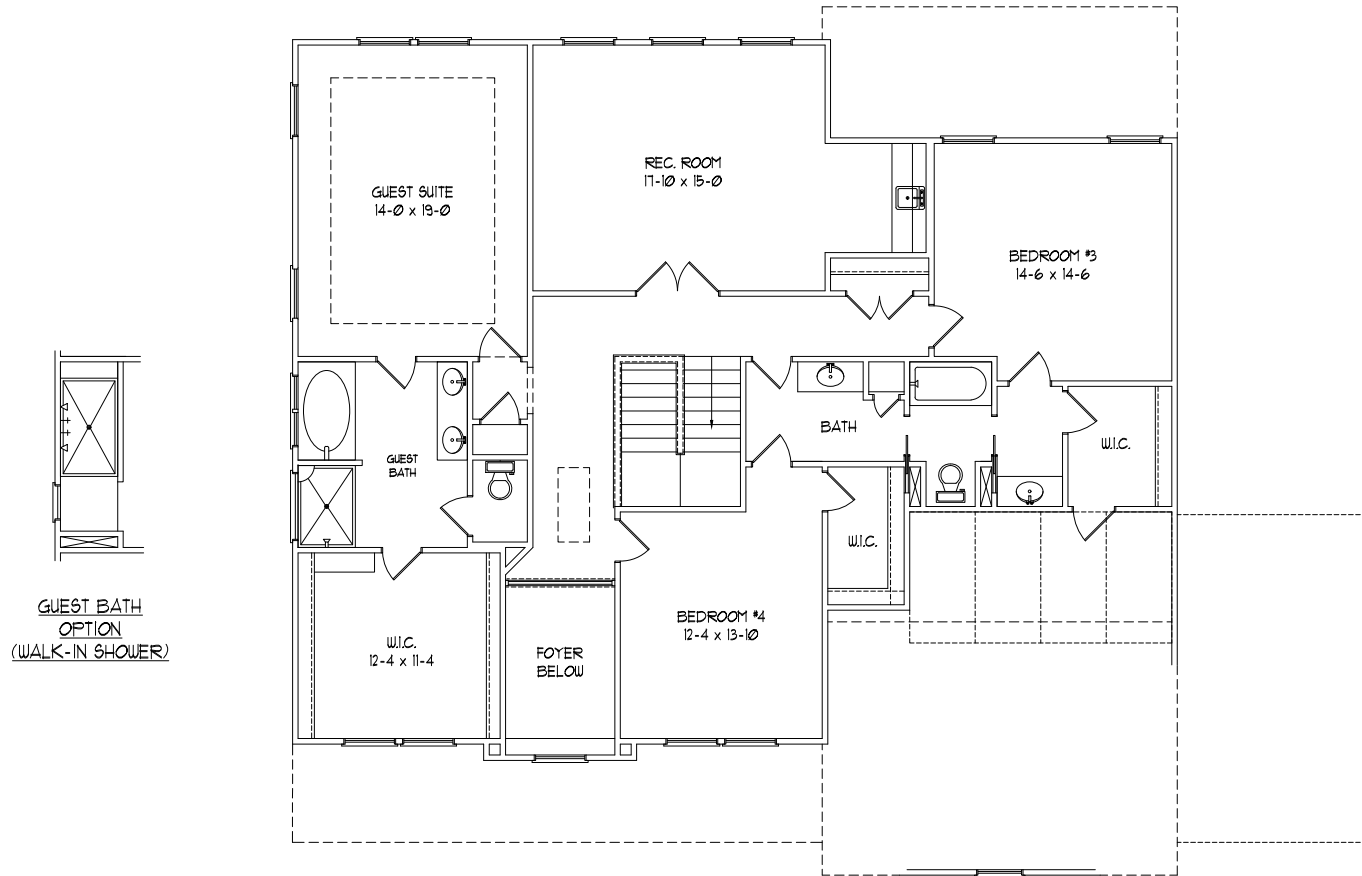
MARCH 5, 2024



3745 SQ. FT.

4-5 BEDROOM
3.5 BATHROOM

WIDTH = 54'-0"
DEPTH = 53'-0"



GUEST BATH
OPTION
(WALK-IN SHOWER)

KENNEDY
STANDARD
SECOND FLOOR PLAN

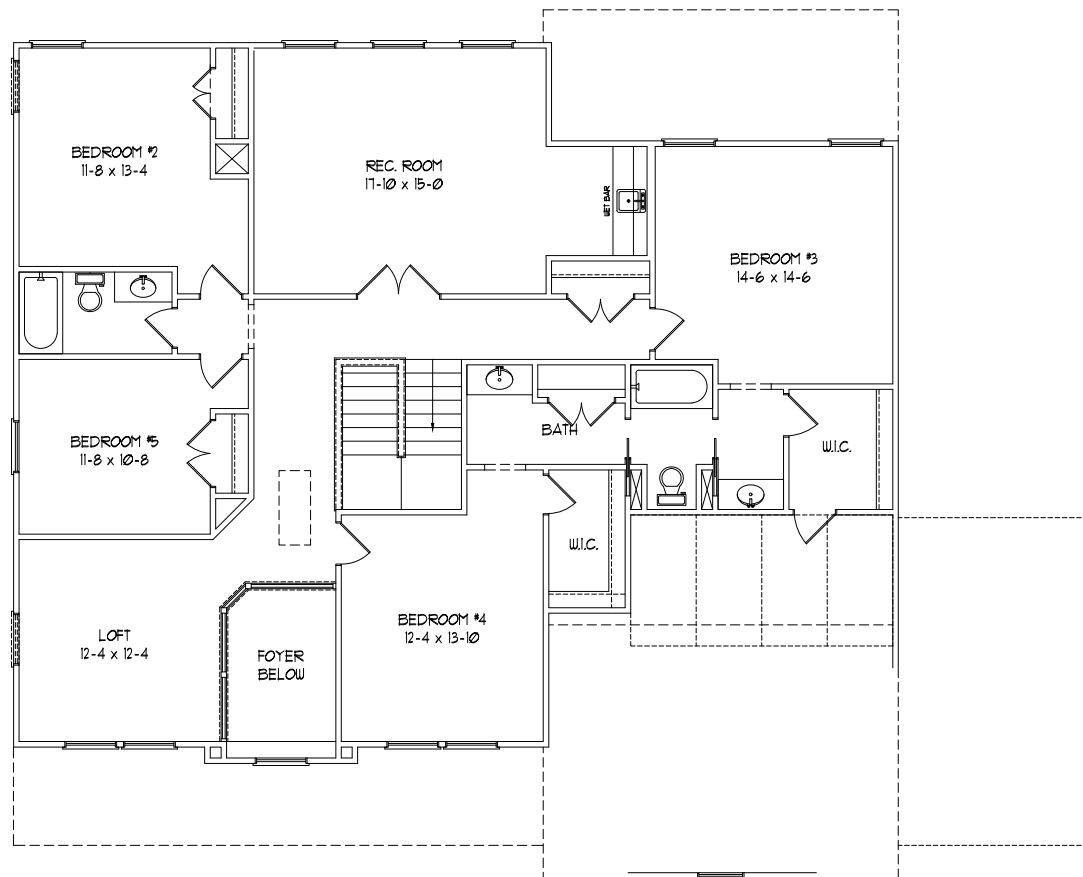
MARCH 5, 2024



3745 SQ. FT.

4-5 BEDROOM
3.5 BATHROOM

WIDTH = 54'-0"
DEPTH = 53'-0"



KENNEDY
OPTIONAL
SECOND FLOOR PLAN

MARCH 5, 2024

